



## PRESTINCERT ELECTRONIC

PRESTINCERT components are specifically designed to punch their own fixing hole in a pre-determined position, providing a secure mechanical and low contact resistance circuit board assembly in one press stroke.

The standard range of Prestincerts for electro-mechanical applications includes brass and stainless steel threaded bushes and stand-off spacers, screw wire wrap and solder terminations, all of which are suitable for punching SRBP, SRBF and glass laminates, low shear strength aluminium and aluminium alloy panels.

### GOOD ELECTRICAL CONTACT

A significant feature of the Prestincert technique is the facility for attaching terminals to printed circuit boards both mechanically and electrically in one operation, without soldering. As the Prestincert component is pressed into the printed circuit board, an annular fillet on the underside of the head makes contact with the copper cladding, causing copper to flow over the edge of the aperture, cleaning it and ensuring a good electrical contact.

### PERFORMANCE UNDER ENVIRONMENTAL EXTREMES

The contact resistance of the Prestincert components has not been found to exceed 2 milli-Ohms after standard vigorous salt spray, electrical temperature and tropical testing.

### GLASS FIBRE MATERIALS

Some grades of glass laminate have been found suitable - generally they necessitate using a standard die which has been opened out by 10 to 15 per cent of the sheet material thickness - but the wide range of glass laminate materials now available means certain extremely hard or brittle laminate may not prove suitable. If in doubt, consult our Technical Advisory Service.

### MULTI-INSERTION TOOLING

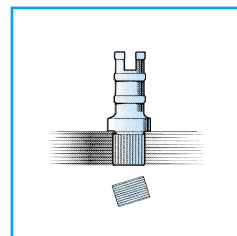
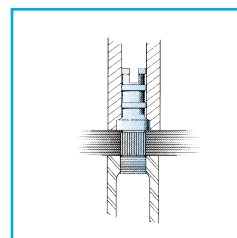
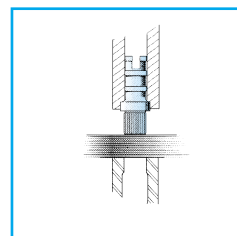
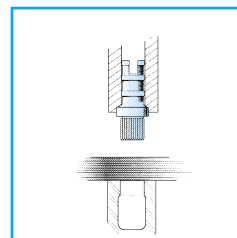
Insertions can be carried out either as a series of single point operations or on a simultaneous multi-insertion basis, according to the dictates of the job. We shall be pleased to discuss multi-insertion tooling upon request.

### SPECIAL PRESTINCERT COMPONENTS

In addition to the standard items listed, we shall be pleased to consider the manufacture of special Prestincert components upon request.

### PLUS POINTS

- Fast and easy push fit - no pre-drilled hole needed
- Simple tooling and kit press available
- Supplied plated from stock
- Good electrical contact



IN ADDITION TO THE ITEMS DETAILED, A WIDE VARIETY OF PRESTINCERT COMPONENTS ARE/CAN BE CUSTOM MADE TO ORDER.

## PRESTINCERT - Turret Lugs

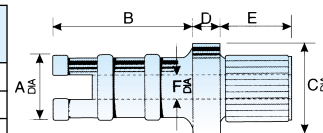
### PUNCHED DIRECTLY INTO SHEET MATERIALS - NO FIXING HOLES REQUIRED

Suitable for most cold punching laminates (SRBP and SRBF), low shear strength aluminium and aluminium alloys.

Material: Brass Finish: Tin

A	B	C	D	E	F	Material thickness		Part number	Insertion tools
						Min	Max		
2.6	5.4	4.0	1.6	2.5	1.1	2.4	2.4	<b>L1539</b>	Y11433/Orange
2.6	5.4	4.4	1.6	3.3	1.1	3.2*	None*	<b>L1538</b>	T28800/Orange/Green
3.2	7.2	4.8	2.0	3.9	1.3	3.2*	None*	<b>L1537</b>	T27471/Yellow/Green
3.2	7.2	4.8	2.0	2.5	1.7	2.4	1.6*	<b>Y12186</b>	T27471/Yellow/Green

\* Not suitable for L1600 kit press - use C7308



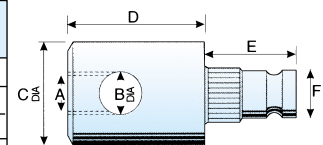
## PRESTINCERT - Screw Binding Posts

### PUNCHED DIRECTLY INTO SHEET MATERIALS - NO FIXING HOLES REQUIRED

Suitable for most cold punching laminates (SRBP and SRBF), low shear strength aluminium and aluminium alloys.

Material: Brass Finish: Silver

A	B	C	D	E	F	Material thickness		Part number	Insertion tools
						Min	Max		
6BA	3.0	5.5	8.9	5.7	2.4	1.6	1.6	<b>Y10950</b>	T25992/Blue/Blue
6BA	2.2	4.8	4.8	6.0	2.1	1.6	1.6	<b>B1211</b>	T26819/Green/Green
M2.5	3.0	5.5	8.9	5.7	2.4	1.6	1.6	<b>Y20058</b>	T25992/Blue/Blue
M2.5	2.2	4.8	4.8	6.0	2.1	1.6	1.6	<b>B1212</b>	T86819/Green/Green



## PRESTINCERT - Solder Terminals and Wire Wraps

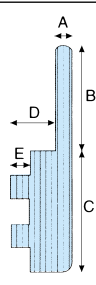
### DIMENSIONAL DATA

M = Maximum board thickness

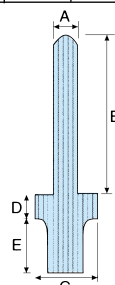
Note - For applications requiring a higher insertion force, insertion tools must be used with C7308 adaptor in conventional presses.

A	B	C	D	E	F	G	M	Part number	Insertion tools
1.57x0.81	11.1	12.7	2.4	2.2	-	-	1.6	<b>L1670</b>	T26494
1.27x0.91	10.2	4.0	1.6	3.2	-	-	1.6	<b>L1669</b>	T24735/Blue
0.97	4.8	2.4	0.8	1.9	-	-	1.6	<b>B1229</b>	T28103/White/White
0.97	4.8	3.2	0.8	1.9	-	-	1.6	<b>L1598</b>	Y11433/White
0.97	4.8	3.2	0.8	2.3	-	-	1.6	<b>Y11985</b>	Y11433/White
1.57	4.8	3.2	1.6	2.5	-	-	2.4	<b>L1673</b>	Y11433/Black

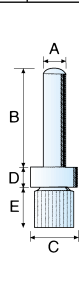
\* Not suitable for glass boards



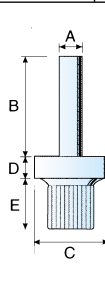
\*L1670



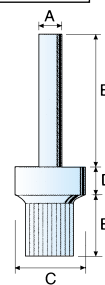
\*L1669



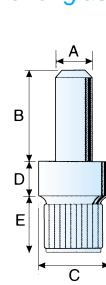
\*B1229



L1598



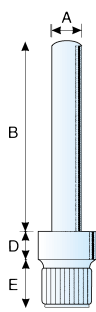
Y11985



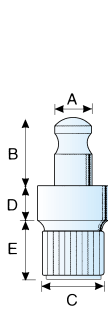
L1673

A	B	C	D	E	F	G	M	Part number	Insertion tools
1.57	11.1	3.2	1.6	2.5	-	-	2.4	<b>Y3976</b>	T26858/Black/Black
1.57	3.2	3.2	1.6	2.5	-	-	2.4	<b>L1533</b>	Y11433/Black
1.97	4.8	3.2	1.6	2.5	-	0.9	2.4	<b>B1214</b>	T26666/Yellow/Yellow
0.97	4.8	2.4	0.8	6.7	1.4	-	1.0	<b>Y11689</b>	T28103/White/White
1.57	4.8	3.2	1.6	7.3	1.6	-	1.6	<b>L1674</b>	Y11433/Black
1.57	3.2	3.2	1.6	5.7	2.4	-	2.4	<b>L1534</b>	Y11433/Black
1.97	4.8	3.2	1.6	7.3	2.4	0.9	2.4	<b>Y3317</b>	T26666/Yellow/Yellow

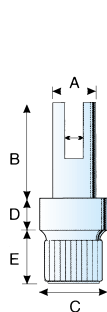
\* Not suitable for glass boards



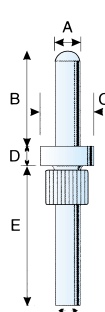
\*Y3976



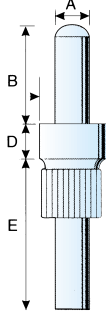
\*L1533



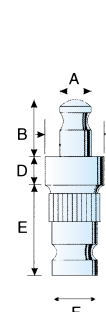
\*B1214



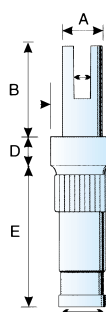
Y11689



\*L1674



L1534



\*Y3317

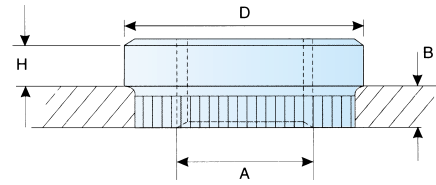
# PRESTINCERT - Bushes Threaded

## DIMENSIONAL DATA FOR THREADED BUSHES

### PUNCHED DIRECTLY INTO SHEET MATERIALS - NO FIXING HOLES REQUIRED

Suitable for most cold punching laminates (SRBP and SRBF), low shear strength aluminium and aluminium alloys. Metric and Unified Bushes have coding ring on external diameter.

All components shown here can be inserted using tools that fit the L1600 kits or C7308 adaptor.



### BRASS BUSHES - Tin Plated

A	B	D	H	Part number	Insertion tools
6 BA	2.4	6.35 (0.25")	1.6	<b>L1535</b>	Y11433/Red
6 BA	1.6	6.35 (0.25")	1.6	<b>L1540</b>	Y11433/Red
4 BA	1.6	7.94 (0.312")	1.6	<b>L1541</b>	Y11433/Green
2 BA	1.6	9.53 (0.375")	1.6	<b>L1542</b>	Y11433/Yellow
M 2.5 ISO	1.6	6.0	1.6	<b>Y11435</b>	Y11438/Red/Black
M 2.6 DIN	1.6	6.0	1.6	<b>Y12036</b>	Y1 1438/Red/Black
M 3 ISO	1.6	6.5	1.6	<b>Y11436</b>	Y11438/Green/Black
M 4 ISO	1.6	8.5	1.6	<b>Y11437</b>	Y11438/Yellow/Black
4-40 UNC	1.6	6.35 (0.25")	1.6	<b>Y3514</b>	Y1 1433/Red
6-32 UNC	1.6	7.94 (0.312")	1.6	<b>Y20045</b>	Y11433/Green/Blue
10-32 UNF	1.6	9.53 (0.375")	1.6	<b>Y12446</b>	Y11433/Yellow/Blue

### STAINLESS STEEL BUSHES

A	B	D	H	Part number	Insertion tools
M 2.5	1.6	5.30	1.6	<b>B1974</b>	C9857
M 3	1.6	6.35	1.6	<b>B1975</b>	C9850
M 4	1.6	7.94	1.6	<b>B1976</b>	C9858
M 2.5	2.0	5.30	1.6	<b>B1977</b>	C9857
M 3	2.0	6.35	1.6	<b>B1978</b>	C9850
M 4	2.0	7.94	1.6	<b>B1979</b>	C9858

### STEEL BUSHES - Tin Plated

A	B	D	H	Part no.	Insertion tools
M 3	2.0	6.50	1.6	<b>B1829</b>	Y11438/Green/Black
M 4	2.0	8.50	1.6	<b>B2074</b>	Y11438/Yellow/Black

# PRESTINCERT - Spacers

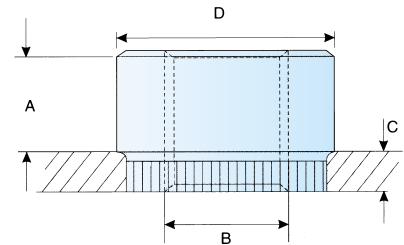
## DIMENSIONAL DATA FOR SPACERS

### PUNCHED DIRECTLY INTO SHEET MATERIALS - NO FIXING HOLES REQUIRED

Suitable for most cold punching laminates (SRBP and SRBF), low shear strength aluminium and aluminium alloys.

### BRASS SPACERS - Threaded

A	B	C	D	Direct Electrical Contact	Part number	Insertion tools
1.0	M 2.5	1.6	6.0	Yes	<b>B1969</b>	C9841
1.0	M 3	1.6	6.5	Yes	<b>B1970</b>	C9834
1.0	M 4	1.6	6.5	Yes	<b>B1972</b>	C9840
3.0	M 3	1.6	6.5	No	<b>B2106</b>	C9997
4.0	M 2.5	1.6	6.0	No	<b>B2096</b>	C9989
5.0	M 2.5	1.6	6.5	No	<b>B2089</b>	C9979
5.0	M 3	1.6	6.5	No	<b>B1535</b>	C8949
6.4	M 3	1.6	6.5	No	<b>B2160</b>	C10060
10.0	M 3	1.6	6.5	No	<b>B1536</b>	C8950
14.0	M 3	1.6	6.5	No	<b>B1809</b>	C9627



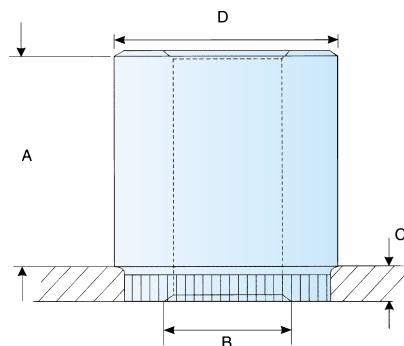
THREADED HOLE

### BRASS SPACERS - Plain hole

A	B	C	D	Direct Electrical Contact	Part number	Insertion tools
3.5	3.4	1.6	6.5	No	<b>B1871</b>	C9749
5.0	3.4	1.6	6.5	No	<b>B1352T</b>	C7568
5.5	3.4	1.6	6.5	No	<b>B2143</b>	C7568
6.0	4.2	1.6	7.9	No	<b>B2121</b>	C10014
10.0	3.4	1.6	6.5	No	<b>B1357</b>	C7653

### STAINLESS SPACERS - Threaded

A	B	C	D	Direct Electrical Contact	Part number	Insertion tools
1.0	M 2.5	1.6	6.0	Yes	<b>B2077</b>	C9841
1.0	M 3	1.6	6.3	Yes	<b>B2078</b>	C9880
3.5	M 4	1.6	7.9	No	<b>B2154</b>	C10052
4.0	M 3	1.6	6.3	No	<b>B2059</b>	C9853
4.0	M 3	2.0	6.3	No	<b>B2060</b>	C9853
4.0	M 3	2.4	6.3	No	<b>B2061</b>	C9853
8.0	M 3	1.6	6.3	No	<b>B2153</b>	C10051



PLAIN HOLE

### STAINLESS SPACERS - Plain hole

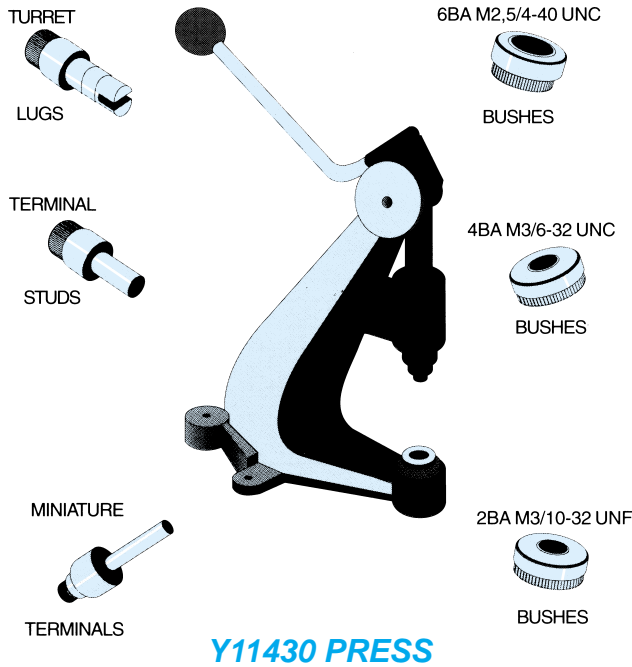
A	B	C	D	Direct Electrical Contact	Part number	Insertion tools
3.2	2.6	1.6	6.0	No	<b>B2130</b>	C10026
4.0	3.4	1.6	6.3	Yes	<b>B2068</b>	C9856
6.5	2.7	1.6	6.0	No	<b>B2056</b>	C9852
6.5	2.7	2.0	6.0	No	<b>B2057</b>	C9852
6-5	2.7	2.4	6.0	No	<b>B2058</b>	C9852

All dimensions in millimetres

# PRESTINCERT - Tooling - L1600 Kits

**COMPONENTS PUNCHED DIRECTLY INTO SHEET MATERIALS - NO FIXING HOLES REQUIRED**

Suitable for most cold punching laminates (SRBP and SRBF), low shear strength aluminium and aluminium alloys.



**Y11430 PRESS**

Comprising Y11430 ½ ton press - together with quantities of six different components most commonly needed, the L1600 kit is ideal for work bench test applications and small type production runs. The kit tools are made from silver steel, and are colour coded for quick reference. The Press has a throat dimension of 3½ inches.

**Threaded Bushes & Tools supplied in L1600**

No.	Thread	Kit Tool & Colour Code
L1540	6BA	Y11433/Red
L1541	4BA	Y11433/Green
L1542	2BA	Y11433/Yellow

**Threaded Bushes & Tools supplied in L1600/M**

No.	Thread	Kit Tool & Colour Code
Y11435	M2.5	Y11438/Red/Black
Y11436	M3	Y11438/Green/Black
Y11437	M4	Y11438/Yellow/Black

**Terminals and Tools supplied in all L 1600 kits**

No.	Thread	Kit Tool & Colour Code
L1673	Terminal	Y11433/Black
L1598	Mini-Terminal	Y11433/White
L1539	Turret Lug	Y11433/Orange

## PRESTINCERT - Adaptor for Kit Tools

**C7308 ADAPTORS ENABLE SNAP-IN TOOLS TO BE USED IN CONVENTIONAL PRESSES**

Part No.	Dimension A
C7308	1"
C7308/M	12mm

